

CHEMILUMINESCENCE IMAGING SYSTEM

IG-16CIS



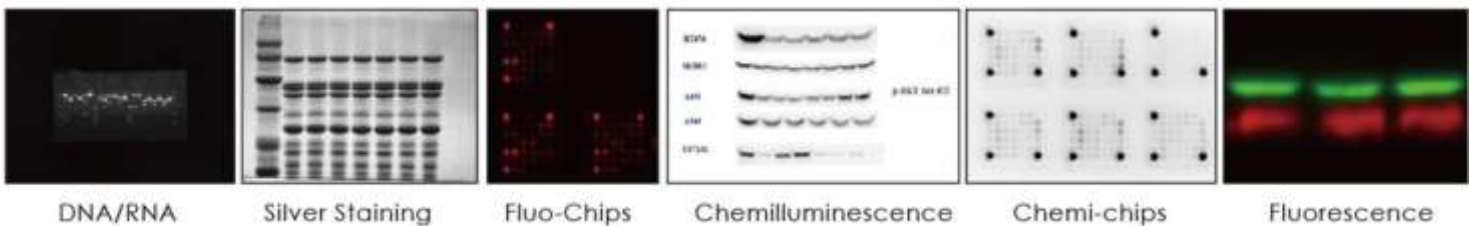
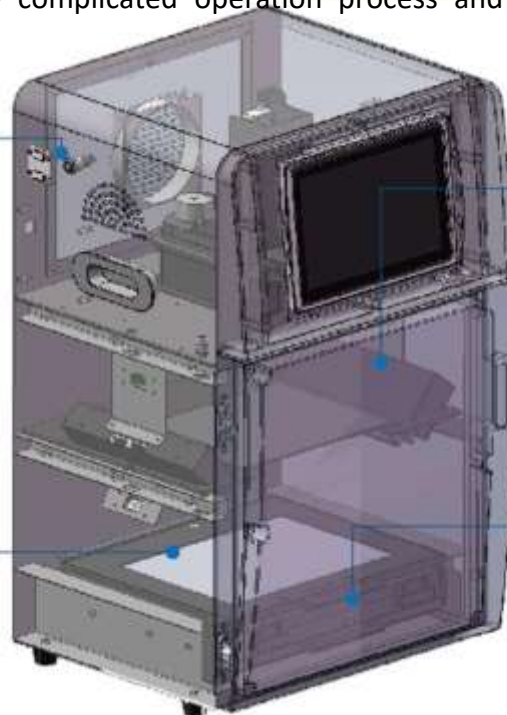
IGENE LABSERVE

Innovative • Interactive • Intuitive

FEATURES & SPECIFICATIONS

DESCRIPTION

Our chemi series are equipped with the latest detection system and human-computer interactive program. It provides gel documentation, visible light inspection, RGB -Fluorescence and Chemiluminescence imaging application. It adopts a high resolution and highly sensitive scientific grade- Camera, which enables the instrument to capture utt er weak signals under extremely low illumination condition. The automatic controls and the intuitive software we offered can help the researchers to get rid of the complicated operation process and increase the experimental efficiency.



Gel Inspection : Diverse Fluorescent dyes e .g. Ethidium bro mide, SYBR™ Gold, SYBR™ Green, SYBR™ Safe, GelStar™, Flouescien and Texas Red etc.

Protein Inspection: Coomassie Blue, Silver Staining, Sypro Red, Sypro Orange, Pro-Q Diamond, Deep purple etc.

Blotting membrane: Western Lighting, ECL,ECL plus,CDP Star, Supersignal, CSPD,LumiGlo,Cy2, Cy3, Cy5,FITC,AlexaDyes,DyLight dyes, ProQDiamond, ProQ Emerald 300, ProQEmerald 488 and IR Dye 680 etc.



FEATURES

❖ RIM MOULD CONSTRUCTION

The front panel and door are designed through environmentally friendly reaction injection moulding.

❖ EASY UPGRADATION

- 1.) UV transmission
- 2.) UV+BLUE light transmission
- 3.) UV+BLUE+WHITE light transmission
- 4.) UV+BLUE+WHITE transmission and RGB reflection

❖ SWITCHABLE OPERATION MODE

You can use your machine by standalone PC or embedded touch screen PC by pressing the "switchbutton" easily.

❖ BLUE AND WHITE LIGHT ILLUMINATOR

The magnetic thimble interfaces realize free switching between the blue light and white light transmission. The touchable brightness adjustment switch facilitates the gel observation and recovery.

❖ SAMPLE TRAY

Super Slim blue LED Transilluminator(470nm)
UVSmart™ UV Transilluminator (302nm)
Super Slim white LED Transilluminator

❖ 8 SOCKET FILTER WHEELS

❖ MULTI-FLUORESCENCE LIGHT MODULE

EXCITATION LIGHT	FILTERS
UV Light Ex365	Em460/30F, for UV excited dye
Blue Light Ex470	Em460/31F, for blue light excited dye
Green Light Ex530	Em460/32F, for green light excited dye
Red Light Ex630	Em460/33F, for red light excited dye
Near infrared Ex660	Em460/34F, for NIR excited dye
Near infrared Ex770	Em460/35F, for NIR excited dye

PARAMETER

IG-16CIS Chemiluminescence Imaging System
Scientific Cooled CCD Camera
CCD Sensor: 12.49mm x 9.9mm
Resolution: 6.05MP 2750 X2200
Pixel Size: 4.54um x4.54um
Pixel Density 16bit(65536 Gray Scale)
Quantum Efficiency: >=75%
Absolute Cooling Temperature: -25 degree C
Motorized F 0.95 ultrafast Lens



Analysis Software

❖ CHEMILUMINESCENCE CAPTURE

Adjust Focus, Set Exposure & click Capture. (Image 1)

❖ INVERT COLOR OPTION

Invert color from white to black
Or vice versa with brightness Adjustment.(Image 2)

❖ DNA RNA Analysis

Analysis of nucleic acid with 1D
Analysis software with all function
of MW, Densitometer etc (Image 3) ❖

PROTEIN CAPTURE

LED Transilluminator can be placed
On sample tray to capture protein
Gel. Just select protein module
(Image 4)

❖ FLORESCENCE CAPTURE

Click Fluorescent module and
Select excitation source white,
CY2,CY3 or CY5 (Image 5)

❖ FIX RUN DISTORTION THROUGH RECALIBRATION

Define any number of absolute Rf
Curves on the image to correct run
Distortion.

❖ DEFINE AND SUBTRACT PROFILE BACKGROUND

Use the built in automatic methods
Or define background manually

❖ ALL MAJOR OPERATING SYSTEMS SUPPORTED

Run on window, Linux and MacOS

